

EdgeFit 4

Versatile Network Management

EdgeFit 4 is a multifaceted network connectivity appliance, engineered to thrive under the rigorous demands of industrial environments and designed for ubiquitous network deployments. This efficient edge platform delivers advanced management capabilities with an ideal assortment of ports, making it perfectly suited for multi-user and multi-WAN edge applications.

With native support for Starlink and integrations with popular 5G cellular modems, EdgeFit 4 fully harnesses the capabilities of Kognitive Networks' EdgeOS. It provides a comprehensive suite of SD-WAN features, including advanced security, content filtering, quality of service, remote access, and bandwidth bonding - enhancing both performance and reliability of network operations.



Complete Network Connectivity Appliance

With four assignable Ethernet ports configurable as WAN or LAN to meet specific or changing network needs, EdgeFit 4 is adept at tackling diverse networking challenges. Housed in a compact platform that fits almost anywhere, EdgeFit 4 is the ideal choice for environments that require flexible connectivity and simple installation.

EdgeFit 4 provides secure, reliable, and efficient network operations, all within a footprint optimized for scalability.

Network Capabilities Tailored to Your Needs



Cloud-Managed with Real-Time Insights

Simple and intuitive user interface with real-time metering and analytics.



Advanced Routing and Bandwidth Bonding

Ensures uninterrupted connectivity by seamlessly combining and controlling WAN sources.



Comprehensive Security Features

Protects network integrity with Deep Packet Inspection (DPI), Traffic Policies, and VPN.

A Perfect Fit

Industrial Strength in a Compact Size

Features a high-performance, fan-less aluminum case in a compact size (4.5" x 4.3" x 1.5"), suitable for mobile/remote applications and standard operational setups.

Versatile Connectivity

Supports up to 12x WAN sources with reconfigurable ports that can also be used for LAN interfaces. 4x physical GE ports, with additional expansion options through USB or using external network switches.

Software-First Approach

Powered by the Kognitive Cloud platform to deliver flexible solutions for network management, controllable and reconfigurable from anywhere.

Wireless Aware

Optimized for wireless connectivity with cellular and multi-orbit satellite support, including turnkey solutions for Starlink installation and usage monitoring.

Integrated Workflow Compatibility

Edge Applications

- Intuitive System Management locally or from the Cloud
- Cloud Service Portal for fleet management
- Mobile App Management

Local Area Network Management

- Connected and Routed Networks
- LAN, DHCP, DNS, Bonjour/M-DNS
- Quality of Service (QoS) and Traffic Management by App, Device, or Group

Advanced Quality of Service

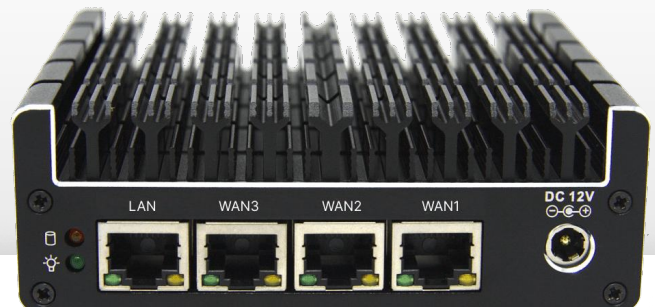
- Deep Packet Inspection (DPI) with Application, Domain, and IP filtering
- Rate, Quota, Priority management
- One-click client/group management
- Priority / Shaping / Blocking

Software Defined Wide Area Network

- WAN Link Priority and Bonding
- Lossless Advance Bonding
- Point of Presence (PoP) Dropoff with USA Internet
- VPN Services

kognitive
EDGE

SD-WAN for the Kognitive Networks platform with support for Kognitive Hub and Kognitive Cloud



WAN / LAN Management	Supports up to 12x WAN sources or LAN interfaces with reconfigurable ports
Ethernet	4x GE ports, additional 2x GE ports using USB expansion
Network Configurability	Up to 150 Clients, 15 VLAN Networks; Stateful Firewall
Compute Power	Intel Celeron class processor; 8 GB RAM, 120 GB storage
Expansion	2x USB 3.0 ports – 5G modem adapter supported
Cooling	Passive, Fanless – Silent
Mounting	Standalone / Universal / VESA mount kit included
Power	+12VDC (20W Max); 100–240 VAC, 50–60 Hz (AC/DC Power Supply Included)
Physical	4.5" x 4.3" x 1.5" / 115 x 107.5 x 39 mm – 2.8 lbs / 1.2 kg (shipping weight)
Environmental	Operating temp: -10 to +50 C; Humidity up to 95%, non-condensing
Warranty	1 year limited